

# WebGate User Interface

Use your computer's Web-Browser to access WebGate

[Webgate.org](http://Webgate.org)

- Accessible from desktop and mobile terminals.
- GPS tracking using a variety of maps, including custom ESRI layers.
- Two-way messaging and alerts.
- Remote control including radio GPS reports, stun, revive and ESN requests
- Historical reports and geofencing.
- Administrative control of assets and users.

Excellent profit margins! VOCALIS and WebGate are Software Services only. This allows for excellent reseller discounts.

# WEBGATE SCREEN

**Datalink** User: Tim ▼

Auto Updated: 2:26:55 PM

▼ Asset List

Search:

- Datalink
- i50-Cell Iridium test (0.0.6)
- Iridium i50 test (0.0.13)**
- New (0.0.31) (0.0.31)
- Penticton-i50 v3 iridium (0.0.5)
- RUG-GEAR (101.0.1)
- SAMSUNG 10 (0.0.12)
- WEBLINK-1 (0.0.11)

**Asset Properties**

Name: Iridium i50 test (0.0.13)  
Last TX: 6 days ago  
GPS Time: 11/3/2015, 7:45:44 AM  
GPS Signal: Valid (Old Data)  
Network: Radio  
Latitude: 49.46717°  
Longitude: -119.57513°  
Speed: 0 km/h  
Heading: 0° (N)  
Address: [Find](#)  
Driver: Logged Out

▼ Map

▼ Messages

- call office - Iridium i50 test (...)
- Ok - Iridium i50 test (0.0.13)
- Call office - Iridium i50 test (...)
- iridium 1 - Penticton-i50 v3 i...
- SOS - Australia Test (0.0.1)

200 km | 200 mi | MapQuest - Map Data © OpenStreetMap (License) | -127.44141, 53.33087

Nominatim Search Courtesy of MapQuest - © OpenStreetMap (Terms) Copyright © Datalink Systems, Inc. (Ver. 6.0.2)

ALL ASSETS, MACHINE & HUMAN ON THE SAME SCREEN

## GPS Radio & Data (P25–IDAS-DMR-Analog)

WebGate can process GPS, SOS & Two-Way texting with many LMR Radio brands including;

- Kenwood NEXEDGE - EFJ P25 - DMR – Analog
- ICOM P25 - IDAS - UHF/VHF Digital
- BK P25 – UHF/VHF Digital
- Motorola P25 – UHF/VHF Digital

Datalink's RedAlert can process most LMR Radio SOS button activations and route the alert along with GPS coordinates to rescue personnel.

# Radio Connections (P25-IDAS-DMR)

- Multiple connections via base radios and IP to cover wide areas or separate networks.
- Base radio serial links can be direct to server or via serial/Ethernet-over-Internet.
- Direct IP link to Digital Repeaters.
- Encryption descrambling.
- Monitor groups and individual radios.
- Monitor live Tower RSSI strength.
- Link independent digital networks via I.P.

# Radio Options

- GPS tracking, polling, and alerts.
- Receive status messages from the radio and translate them into text.
- Remote control of radio including GPS reports, stun, revive, and ESN requests.
- Send text messages or emails to radios.
- Process responses from radio.
- Send status messages to the radio.
- JPS Nexedge bridge to VOCALIS PTTtoC



# HARDWARE

Buy from us or buy your own



Boxchip S900A



Anysecu W2 Pro

Datalink's DataGate is compatible with most Android devices, including Smartphones however not recommended due to poor audio quality.

Datalink undertakes Bespoke development for special projects. Email: [info@datalinkSystemsInc.com](mailto:info@datalinkSystemsInc.com)



Meitrack T633

# LMR Email Routing

- DataGate defines an email address for each LMR Digital radio.
- Messages sent to that address are formatted and forwarded to the radio.
- Responses from the radio are returned to the original email address.
- Provides generic interface that can be used for dispatch, manufacturing and hospitality applications.



# CLIMATE CHANGE

LMR - 4G RADIOS - SATELLITES

WebGate will work with most LMR Digital Radios plus 4G LTE, iOS & multiple Satellite Networks. LMR limited to GPS and data processing.

For 4G we recommend the BOXCHIP S900 A or B as a rugged, high quality hand-held terminal with loud clear audio.

The BOXCHIP S900A is also DMR compatible  
For GPS and data processing we recommend MEITRACK devices.

**GPS TRACK ALL ASSETS AND SEE LIVE UPDATES ON COMMON SCREENS – MOBILE OR FIXED**





# DATALINK + GARMIN INREACH

## Garmin InReach Devices

Iridium Satellite Communications



The global-covering Iridium satellite network allows SAR and ground-based Wildfire Firefighting and SAR Teams to be in contact with remote Command & Control Desks every two minutes.

WebLink can provide special airtime packages and full integration with the WebGate SaaS Platform, unlocking the full potential of Garmin InReach devices.



## DATALINK + STARGATE

StarGate linked to a Starlink terminal will operate in regions where LMR and Cellular services do not exist, and where conventional satellite services prove too expensive or too slow. StarGate will also work over 4G networks.

StarGate extends LMR coverage on a temporary or permanent basis by connecting a Repeater or base radio to a StarGate terminal.

**DataGate is also compatible with Atak and CivTAC**

# Track School Buses, Transit and Trolley Buses

**Gatlinburg Trolley Locator** [Gatlinburg Trolleys | Schedule \(PDF\) | Visitors](#)

**Route List**

- ALL
- BLUE
- GREEN
- PINK
- PURPLE
- RED
- TAN
- YELLOW

**Trolley Stops**

- Convention Center
- Cooters
- Covered Bridge Condomini
- Covered Bridge Shops
- Crafters Place / Lorelei Can
- Creek Place
- Crossroads Mall
- Crystelle Creek
- Dollywood Information Cent
- Dollywood
- Driftwood Apartments
- East Side Motel

**PINK - Trolley 3**  
Approaching: Zoder's Inn

Map data ©2015 Google 100 m

© 2015 Google Terms of Use Report a problem

[Follow Selected Trolley](#) | [Street View](#)

© Datalink Systems, Inc.

**Trolley Local Time: 8:02 PM**  
Operated by **Land Air Total Communications**

# CITYNET

**Datalink International**  
Wireless Data Systems

**CityNET**

A Network Agnostic Wireless Management Platform  
4G/5G - Wi-Fi - LMR - LoRa - Satellite

**aws**

**CAMPUS & STUDENT SECURITY**

**Track & control equipment**  
Monitor the CANBus. Lock-out unauthorized operators.

DataGate is a "one of a kind" data connectivity platform conceived in 2000 and after twenty-two years of serving Government agents around the world still has no equal. DataGate is a sole sourced product which allows you to bypass the traditional open tender process. There is no alternative!

DataGate is managed in the AWS CLOUD with minimal monthly or yearly access fees providing simple log-in credentials. Contact Datalink or its Agents for pricing and options.

CityNet utilizes our WebGate browser-based interface which is built into our DataGate platform and routed through Amazon's AWS CLOUD service. CityNet can be viewed directly on Smartphones, Tablets, Laptops, TV Displays, etc... Simply log into your browser of choice and unleash the power of CityNet for your municipality!

CityNet can display any mobile asset regardless if its linked to field personnel, fixed machinery, or vehicles and supports all levels of wireless communication including LMR, Cellular 4G-5G, Wi-Fi, Satellite and LoraWAN. View mobile assets city wide or zoomed down to street level. Since WebGate is a live screen, you can display all GPS based assets stored in various 3rd party databases and updated within seconds along with GPS coordinates highlighted as they occur. DataGate also processes GPS and text data from LMR portable and mobile radios including ICOM, Kenwood, BK Technologies, and limited Motorola variants.

**SCADA: Remote control over 4G or LoraNET**

**LoRa**

Smart Cities can take advantage City wide long range LoRa Networks to monitor and control a wide range of remote hardware in the field. Replacing older VHF links.

**Monitor Street repair crews**

**Protect Parking Enforcement Staff with GPS 500 Products**

**VOCALIS PTTtoC**

**VOCALIS** is an advanced form of PTTtoC: transmitting voice PTT, GPS, Messaging, Live Video, and the ability to create customized patrol routes. Traditional PTTtoC solutions in the market support mostly voice and GPS tracking only. GPS data from LMR radios and emails can also be processed by **VOCALIS**.

**SECURITY**

Rest assured knowing that VOCALIS code is encrypted and managed by Datalink System's engineers and installed on servers operated by Amazon's AWS CLOUD service. Ports blocked against Chinese Government snooping.

**LoRa**

**LoRa technology** is a new wireless protocol designed specifically for long-range, low-power communications. LoRa stands for Long Range Radio and is mainly targeted for M2M and IoT networks. This technology will enable public or multi-tenant networks to connect a number of applications running on the same network.

Each **LoRa gateway** has the ability to handle thousands of remote nodes. The signals can span a significant distance, making constructing a City wide network much cheaper and faster to implement.

**Protect Students and Teachers in the District's Field Link. Provides first emergency ALERTS to internal security and outside EMS and Law Enforcement.**

**Protect outside workers with wireless safety pendants or Datalink's GasAlert**

**Protect City Staff working with the homeless**

**GPS monitor truck coverage tracks for adherence to schedules**

**GPS monitor high speed patrols**

Contact [Datalink Systems International Inc.](#) or our regional sales agents to start selling our solutions.

copyright: Datalink Systems International Inc. 2022

Every City has a GIS and Mapping Department. WebGate is compatible with ESRI and a wide range of mapping formats used by the GIS Department.

WebGate is also compatible with LoRa, a relatively new, low-cost wide area wireless data network, that allows thousands of devices, such as sensors, valves, and relays to be monitored and controlled.

City Power, Sewer, and Water access points can be GPS Geocoded and added to mobile Bespoke Maps.

Every City Manager should know about WebGate [Click here](#) for more details.



# MARKETS

DataGate Solutions and Bespoke developments support a wide range of regional requirements

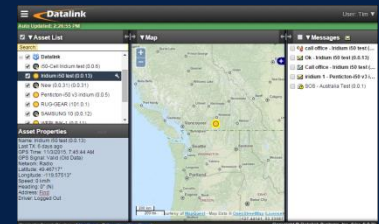
- Lone Worker Safety.
- School Districts. School Bus and Student Monitoring.
- Municipal Bus Tracking.
- Municipality Services. Lora data communications.
- Municipal Works heavy duty machinery. Monitor Engine CanBUS.
- Local Fleet Communications.
- Meter Maid SOS. Immediate Police Support.
- Agricultural remote sensor monitoring.
- Garbage Truck Schedule monitoring and tracking.

# WebGate



Cellular PoC and GPS

LMR Email / Dispatch



WebGate Dispatch



Web Services

DataGate

Base radios

Repeaters

Multiple Satellite Services



Our software is available free for evaluation to all dealers  
Copyright © 2023 Datalink Systems International Inc.

# FEATURES



## **GROUPS**

Manage multiple devices into groups and sub-groups



## **SOS**

Send emergency alerts and relay by email, SMS, Voice



## **EMAIL & SMS**

Exchange text messages to and from platform / 3rd parties



## **HISTORY**

Generate and retrieve interactive and/or tabular reports



## **GEOFENCING**

Create and monitor fences, POI and check movements



## **MAPS**

Wide choice of mapping options (Esri, Google, WMS)

# CASE STUDY-1

## ICOM SAT100 Satellite Terminals

Two trains collided head-on on a key African Coal Train single track railway line. The coal trains had almost no communications with train control for most of the 1,200 Km. between the coal mines and the shipping port.

The coal train company turned to Ground Control Systems in the U.K. who suggested a Satellite based solution and in turn brought ICOM U.K. into the project who in turn suggested Datalink Systems as a developer of a Bespoke system based on ICOM's SAT100 PTTToC terminals to address the communications challenge.

Datalink Systems proposed a PTT Voice communication system based on SAT100 devices with additional GPS tracking of each Coal Train with Datalink's DataGate processing GPS data provided by each SAT100 terminal.

The proposed design was approved by TransNet's Head Project Engineer.



# CASE STUDY-2

## **MICHELIN TIRE ROBOTIC PRODUCTION**

Michelin contacted Kenwood to update their aging one-way paging system in their tire production plant. They needed a system to alert maintenance technicians to any breakdowns in the production chain which required immediate repair. Datalink provided a solution.

The Plant Management selected Kenwood NEXEDGE Portable Radios for voice communications and a Datalink text messaging solution based on Datalink's well proven WebGate software management programs. Typically, when a PLC (Programmable Logic Controller) monitoring automated process detects a fault, the PLC sends a status signal to a systems monitoring console.

The console operator will assess the problem and will send a service alert to one of several plant service technicians. The alert service call details are entered into the Datalink software program which is then transmitted over the NEXEDGE network to the appropriate technician for immediate service. The details appear on the portable radio's text screen. The time/date stamped details are also stored in the maintenance departments database. All status reports entered by the technician using the radio status keys are transmitted back to the monitoring control console and automatically recorded into Datalink's local database.

# CASE STUDY-3

## SKELTON TRUCKING

Skelton Truck Lines transports pharmaceutical and blood plasma products in an advanced multi-compartment temperature-controlled transport system across Canada and the United States. Temperatures in each compartment must be strictly controlled and monitored in real-time. Temperatures outside the limits will cause the product to be rejected.

Several years back, Skelton turned to Datalink to develop a real-time monitoring system based on both cellular and Iridium Satellite Networks with automatic switching to satellite when cellular networks were lost.

Whenever temperature thresholds were close to exceeding limits Datalink's WebGate would notify both the driver and Skeltons Dispatch desk.

# Datalink Systems

- Software developer since 1996
- Specializing in custom data solutions with a detailed, hands-on approach
- World-wide commercial and government installations
- Multiple networks, including IDAS, P25, DMR 4G, LTE, Iridium, Globalstar, Thuraya.

A horizontal bar with a teal segment on the left and an orange segment on the right, positioned above the main text.

# THANK YOU FOR TAKING TIME TO VIEW THIS PRESENTATION

Datalink Systems International Inc.  
Las Vegas, Nevada

[Click here](#) to order or to request more details

Copyright: Datalink Systems Inc. 2024